



Cnidoscolorum notulæ
(*Euphorbiaceæ*), 13-14

Francisco Javier FERNÁNDEZ CASAS

FONTQUERIA 55(18): 95-100
MADRID, 01-VII-2003

FONTQUERIA is a series of botanical publications without administrative affiliation. It publishes original works in Botany, particularly those that are of interest to the editors. Its publications are in any language, the only limitation being the ability of the editorial team.

Accredited with the *International Association for Plant Taxonomy* for the purpose of registration or new non-fungal plant names.

PRODUCTION

Database consultant:	Guillermo GONZÁLEZ GARCÍA
Typesetting:	Ambrosio VALTAJEROS POBAR, Ulpiano SOUTO MANDELOS
Screen operators:	Samuel FARENA SUBENULLS, Emilio NESTARES SANTAINÉS
Preprinting:	Sonja MALDÍ RESTREPO, Demetrio ONCALA VILLARRASO

DISTRIBUTION

Postal distribution: contact the editor

Mail for electronic distribution: Fontqueria@yahoo.com

EDITOR

Francisco Javier FERNÁNDEZ CASAS. Madrid (MA)

EDITING CONSULTANTS for this fascicle

Íñigo GRANZOW DE LA CERDA y ROCA DE TOGORES. Ann Arbor (MICH)

José María MONTERRAT MARTÍ. Barcelona (BC)

ISSN: 0212-0623

Depósito legal: M-29282-1982

Cnidoscolorum notulæ (*Euphorbiaceæ*), 13-14

Francisco Javier FERNÁNDEZ CASAS
Real Jardín Botánico. E-28014 Madrid

Supported by a grant of the Spanish Ministry of
Science and Technology, BOS2002-00680

FERNÁNDEZ CASAS, F. J. (01-vii-2003). *Cnidoscolorum* notulæ (*Euphorbiaceæ*), 13-14. *Fontqueria* 55(18): 95-100.

Keywords. Two new species, *Cnidoscolus* (*Euphorbiaceæ*), Brazil.

Abstract. Two new Brazilian species are described in the genus *Cnidoscolus* (*Euphorbiaceæ*): *C. spathulatus* Fdez. Casas and *C. urentissimus* Fdez. Casas.

Zusammenfassung. Es werden hier zwei neue Arten der Gattung *Cnidoscolus* (*Euphorbiaceæ*): *C. spathulatus* Fdez. Casas und *C. urentissimus* Fdez. Casas.

Resumen. Se describen de Brasil dos especies nuevas en el género *Cnidoscolus* (*Euphorbiaceæ*): *C. spathulatus* Fdez. Casas y *C. urentissimus* Fdez. Casas.

Resumé. Deux nouvelles espèces sont décrites du Brésil dans le genre *Cnidoscolus* (*Euphorbiaceæ*): *C. spathulatus* Fdez. Casas et *C. urentissimus* Fdez. Casas.

Resumo. Descreven-se duas novas espécies brasileiras no gênero *Cnidoscolus* (*Euphorbiaceæ*): *C. spathulatus* Fdez. Casas e *C. urentissimus* Fdez. Casas.

Two new Brazilian species of the genus *Cnidoscolus* Pohl (*Euphorbiaceæ*) are described in the present paper. The first new species, from the state of Goiás, is placed without any problem in the section *Vitifoliae* Pax subsect. *Loasiformis* Pax, not far from *C. subinteger* (Chodat & Hassler) Pax & K. Hoffm. and *C. inaequalis* Fdez. Casas. The second one, from the states of Espírito Santo and Minas Gerais, is related with *C. urens* L., sect. *Jussieuia* (Houst.) Pax & K. Hoffm. (1931), but the inner connate verticille of the androecium mark a serious difference with the group and related it to the species of sect. *Calyptrosolen* (Mueller argov. ex Pax) Pax & K. Hoffm. (1931).

As in previous papers, we accept the well-known system proposed by J. MUELLER ARGOV. (1865; 1866; 1874) and F. PAX (1910), and modified by R. McVAUGH (1944: 462), and G. J. BRECKON (1975: 105).

13 *Cnidoscolus* *spathulatus* Fdez. Casas, *spec. nov.*, *Fontqueria* 55(18): 95-97, n° 13, tab. 1, 2 (01-vii-2003)

TYPUS: *H. S. Irwin* 7439 & *T. R. Soderstrom*, 27-X-1964 (F 1819803; K; MBM 50425; NY; R 137915, holo-)

- Sect. *Vitifoliae* Pax subsect. *Loasiformis* Pax, *Pflanzenreich* IV, 147: 92, n° iii.1.d (1910)
DISTR. GEOGR.: Brasil (Goiás)

Sicut collectorum schedulæ suffrutex, folia stimulosa subsessilia, albo lactifer; fructus virens; habitat in herbido “cerrado”.

Xilopodium usque 4 cm diametiens.

Folia usque 18-20 × 5-6 cm; petiolus 0,5-2,5 cm, villosus atque stimulosus, supra canaliculatus; limbus plus minusve spathulatus, cuneatus, simmetricus, apiculatus, sursum disperse stimu-

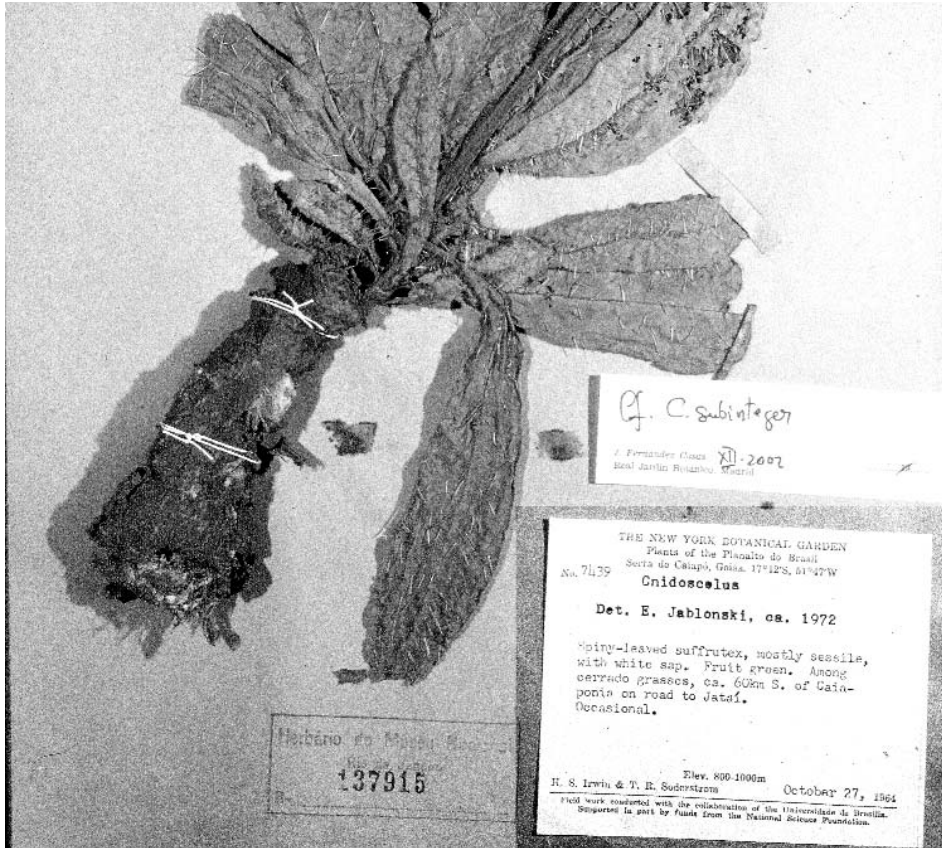


PLATE I

Cnidocolus spathulatus Fdez. Casas. *H. S. Irwin 7439* (R 137915, holotype).

losus et parum pubescens, albomaculatus, subtus stimulosus secus nervum medium atque pubescentior, 1-2 dentibus subapicalibus praeditus; penninervius; nervia secundaria 10-12 paria; margo subcartilagineus, ciliato atque stimulosus; glandulae acropetiolares exiguae.

Cyma florifera foeminea ad 5 cm. Petala foeminea usque ad basim libera, 9 mm, extus villosissima; disci glandulae connatae. Ovarium dense villosum, estimulosum; styli connati, villosi. Cyma fructifera usque ad 14 cm pedunculata. Regma mucronatum, stimulosum.

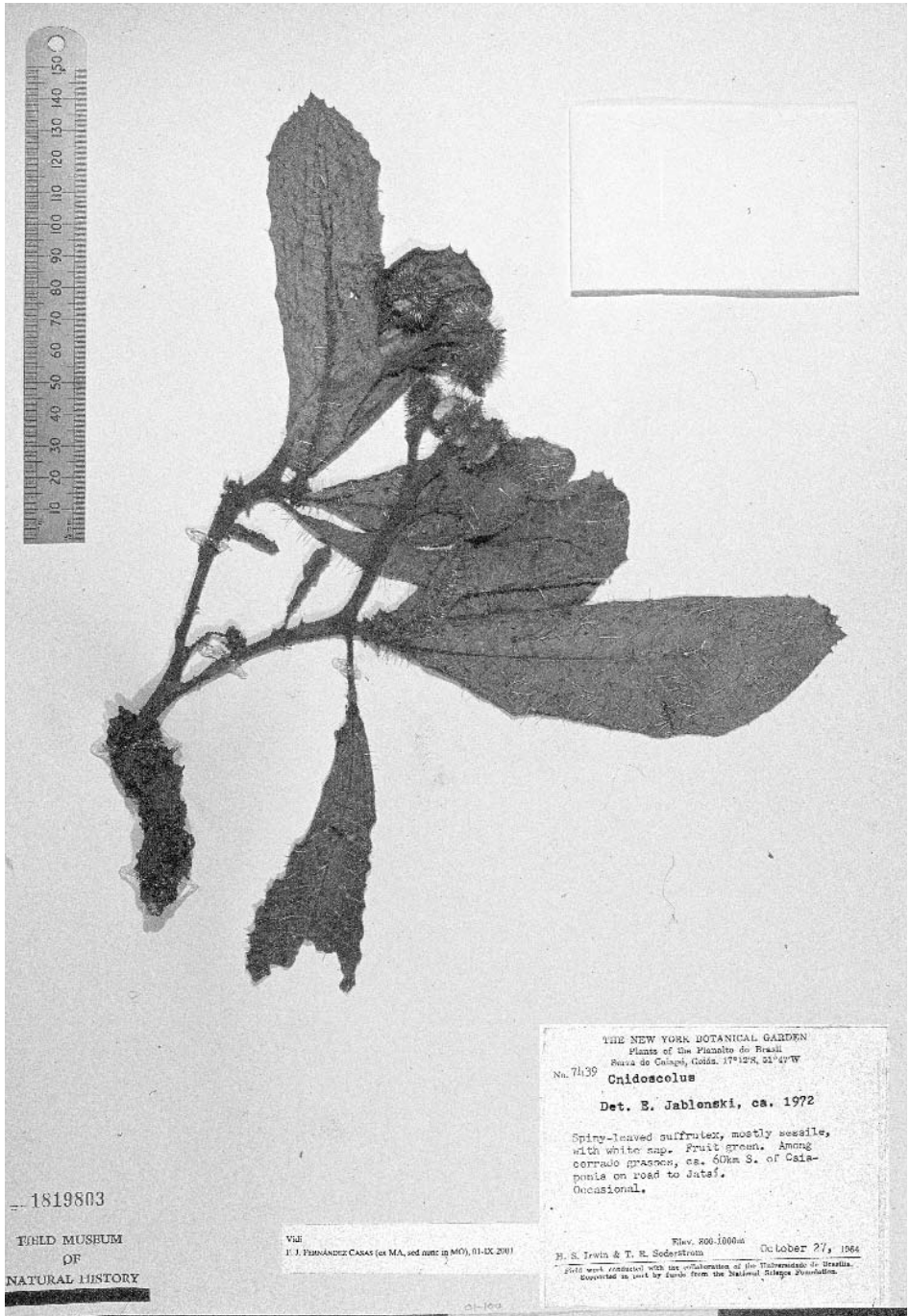
Regma oblongum, villosum atque stimulosum. Semen

NUNCUPATIONIS CAUSA. *Spathulatus*, -a, -um, Latin adjective for spathulate. The leaves are conspicuously spathulate.

SPECIMEN EXAMINED

BRASIL, (10) GOIÁS:

22KDF19 «Serra do Caiapó, 60 km S of Caiaponia, on road to Jata, 800-1000 m. Among cerrado grasses. Suffrutex, spiny-leaved, mostly sessile, with white sap; fruit green», *H. S. Irwin 7439* & *T. R. Soderstrom*, 27-X-1964 (F 1819803; K; MBM 50425; NY; R 137915, holo-; typus *C. spathulatus*).



1819803
 FIELD MUSEUM
 OF
 NATURAL HISTORY

V41
 F. J. FERNANDEZ CASAS (ex MA, det name in MO), 01-IX-2001

THE NEW YORK BOTANICAL GARDEN
 Plants of the Pico do Itaipu
 Serra do Itaipu, Goiás, 17°15'N, 21°47'W
 No. 7439
Cnidoscolus
 Det. E. Jablonski, ca. 1972
 Spiny-leaved suffrutescent, mostly sessile,
 with white sap. Fruit green. Among
 cerrado grasses, ca. 60km S. of Caia-
 pônia on road to Jataí.
 Occasional.
 Fluv. 200-1000m
 H. S. Irwin & T. R. Soderstrom October 27, 1964
 Field work conducted with the collaboration of the Universidade de Brasília.
 Supported in part by funds from the National Science Foundation.

PLATE II *Cnidoscolus spathulatus* Fdez. Casas. H. S. Irwin 7439 (F 1819803, isotype).

14 **Cnidoscolus urentissimus** Fdez. Casas, **spec. nov.**, Fontqueria 55(18): 98-100, n° 14, tab. 3, 4 (01-vii-2003)

TYPUS: *A. Pereira Duarte 3943*, 16-XI-1953 (RB 94409, holo-)

- Species inter sect. *Jussieuia* (Houst.) Pax & K. Hoffm. (1931) et sect. *Calyptosolen* (Mueller argov. ex Pax) Pax & K. Hoffm. (1931) locanda est

DISTR. GEOGR.: Brasil (Espírito Santo, Minas Gerais)

Sicut collectorum schedulæ frutex bimetralis, lactifer, valde urens (inde nuncupationis causa); folia discolora; flori albi.

Folia 5-13 cm petiolata. Petiolus stimulosissimus, glaberrimus. Limbus membranaceus, palmatim quinquenervatus, leve usque 1/3-1/2 trilobus, nervia excepta glaber, rare stimulosus secus nervos; margo ciliatus atque rare glandulosus. Nervia caudato excurrentia; cauda usque 1,5 mm.

Cymæ usque 12 cm pedunculatæ, axillares terminalesque, paucifloræ, congestæ. Pedunculus rare villosus atque stimulosus. Calyx masculus glaberrimus, rare stimulosus, carnosiusculus, ad 2/3 connatus, sub ore compressus; adultus ad 12 mm, pars libera sepali patens. Androceum glaberrimum. Discus quinqueglandulosus, glaberrimus. Stamina novem, quinque in verticillo externo, libera, filamentis brevibus; quattuor interiora in columna crassiuscula connata, filamentis longioribus. Antheræ subdorsifixæ. Ovarium apice dense albo villosus atque rare stimulosus excepto, glaberrimum. Discus duplex, supernus gracilior. Calyptra brevissima, undulato marginata.

Columella trigono claviformis. Semen griseo variegatum, ad 7 × 4,5 mm, *C. urenti* simile; caruncula integra hilum circumdans.

SPECIMENS EXAMINED

BRASIL, (08) **ESPÍRITO SANTO**:

24KUE52 Nova Venécia (ppl.): 18°43'S, 040°24'W, «munic. Nova Venécia: Pedra do Elefante, estrada pra Colatina, 8 km de Nova Venécia, 700 m. Afloramento rochoso; heliófila. Arbusto 2 m, fortemente urticante; espinhos paleáceos; folhas discoloras; flôres alvas», *M. Leitman, G. Martinelli 14858 & S. Porembski*, 11-IV-1996 (RB 321841, para-).

24KUE52 Nova Venécia (ppl.): 18°43'S, 040°24'W, «(norte do Espírito Santo) munic. Nova Venécia: Serra de Cima. Em associações rupestres ou de subbosque, em clareiras. Espinhos venenosíssimos», *A. Pereira Duarte 3943*, 16-XI-1953 (RB 94409, holo-; typus *C. urentissimus*).

BRASIL, (15) **MINAS GERASIS**:

23KPQ76 Carlos Chagas (ppl.), 22°53'S, 043°15'W, «munic. Carlos Chagas: rodovia BR-418, km 112. Paredões rochosos. Arbusto 2 m, ramoso; látex alvo, abundante; flôres alvas», *G. G. Hatschbach 47820*, 11-IV-1984 (MA 701432, para-; MBM, non vidi).

ACKNOWLEDGEMENTS

Francisco Javier Sánchez García revised the Latin descriptions.

REFERENCES

- BRECKON, G. J. (1975). *Cnidoscolus*, sect. *Calyptosolen* (*Euphorbiaceae*) in Mexico and Central America. Ph. dissertation, University of California, Davis. vi + 463 pp.
- MCVAUGH, R. (1944). The genus *Cnidoscolus*: generic limits and intrageneric groups. *Bull. Torrey Bot. Club* **71**(5): 457-474.
- MUELLER ARGOV., J. (1865). *Euphorbiaceae*. Vorläufige Mittheilungen aus dem für DeCandolle's Prodrum bestimmten Manuscript über diese Familie. *Linnaea* **34**: 1-224.
- MUELLER ARGOV., J. (1866). CXXIX. *Jatropha*. In A. P. DE CANDOLLE (ed.) *Prodromus systematis naturalis regni vegetalis* **15**(2): 1075-1105.
- MUELLER ARGOV., J. (1874). XXXVIII. *Jatropha* (Linn. emend.) Muell. Arg. In W. EICHLER & I. URBAN (eds.) *Flora brasiliensis* **11**(2): col. 486-502.
- PAX, F. (1910). *Euphorbiaceae-Jatropheae*. In A. ENGLER (ed.) *Das Pflanzenreich. Regni vegetabilis conspectus*. IV. **147**(Heft 42): [1-3] 4-148.



PLATE III *Cnidoscolus urentissimus* Fdez. Casas. G. G. Hatschbach 47820 (MA 701432, paratype).

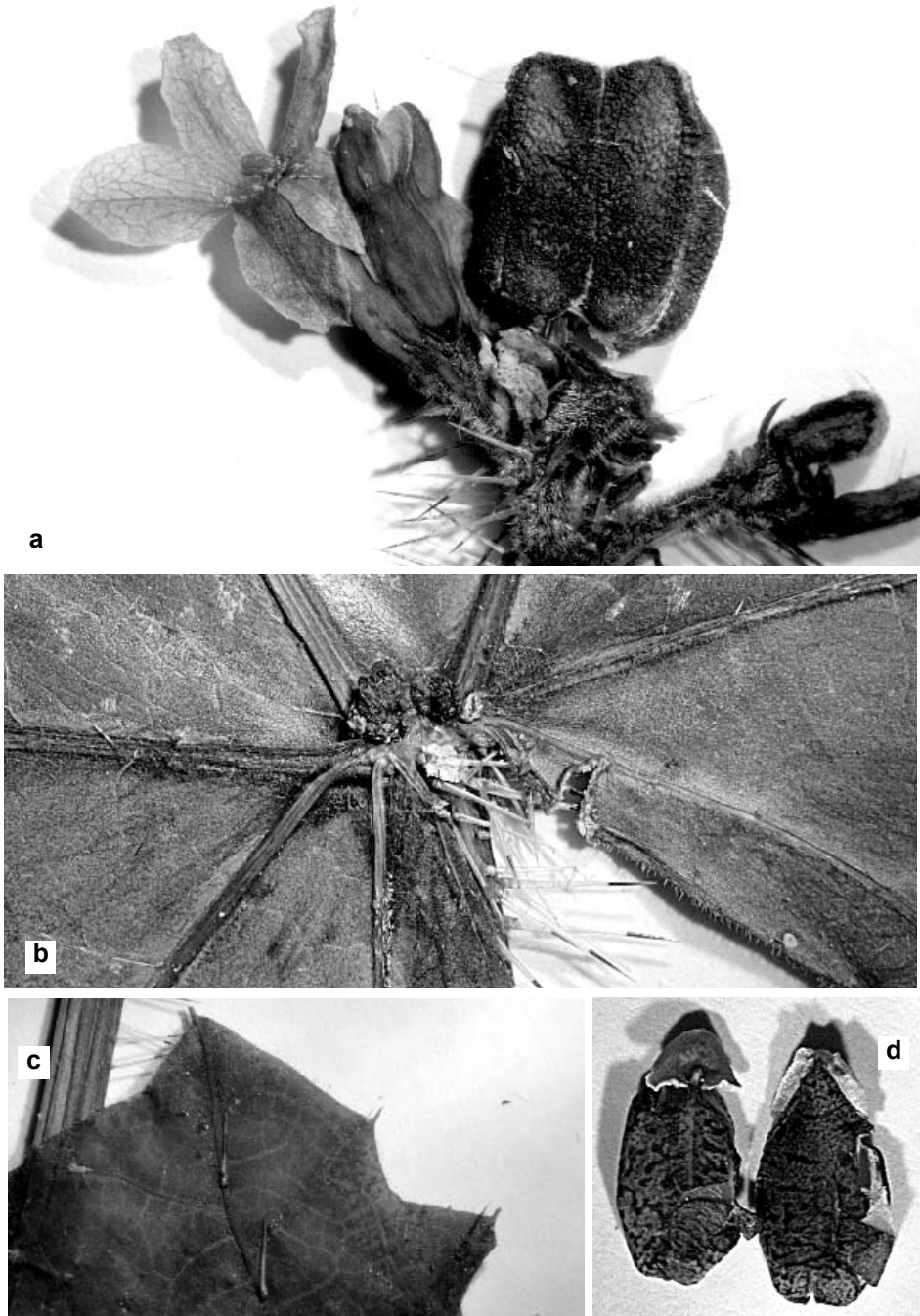


PLATE IV *Cnidoscolus urentissimus* Fdez. Casas. G. G. Hatschbach 47820 (MA 701432, paratype). a) Fertile branch with young regma. b) Acropetiolar glands. c) Abaxial leaf margin. d) Obliterated seeds