



**NARCISSORUM  
NOTULÆ, XVI**

Francisco Javier FERNÁNDEZ CASAS

FONTQUERIA **56**(06): 49-62 [seorsim: 1-12]

MADRID, 09-VI-2010

*FONTQUERIA* is a series of botanical publications without administrative affiliation. It publishes original works in Botany, particularly those that are of interest to the editors. Its publications are in any language, the only limitation being the ability of the editorial team.

Accredited with the *International Association for Plant Taxonomy* for the purpose of registration of new non-fungal plant names.

#### PRODUCTION

Database consultant:	Guillermo GONZÁLEZ GARCÍA
Typesetting:	Ambrosio VALTAJEROS POBAR, Ulpiano SOUTO MANDELOS
Screen operators:	Samuel FARENA SUBENULLS, Emilio NESTARES SANTAINÉS
Preprinting:	Sonja MALDÍ RESTREPO, Demetrio ONCALA VILLARRASO

#### DISTRIBUTION

Postal distribution: Contact the editor  
Mail for electronic distribution: [Fontqueria@yahoo.com](mailto:Fontqueria@yahoo.com)

#### EDITOR

Francisco Javier FERNÁNDEZ CASAS. Madrid (MA)

#### JOINT EDITORS

Hans Joachim ESSER. München (M). German texts

#### EDITING CONSULTANTS for this fascicle

José María PIZARRO DOMÍNGUEZ (MAF)  
María Eugenia RON ÁLVAREZ (MACB)

ISSN: 0212-0623

Depósito legal: M-29282-1982

# NARCISSORUM NOTULÆ, XVI

Francisco Javier FERNÁNDEZ CASAS

Real Jardín Botánico, CSIC. Plaza de Murillo, 2. E-28014 Madrid (España)

FERNÁNDEZ CASAS, F. J. (09-vi-2010). Narcissorum notulæ, XVI. *Fontqueria* 56(06): 49-62 [seorsim: 1-12].

**Keywords.** Systematics, Nomenclature, Chorology, *Narcissus* Linnaeus, sect. *Apodanthi* A. Fernandes (*Amaryllidaceæ*). New Species: *N. arundanus* Fernández Casas, SW Spain (Cádiz, Málaga).

**Abstract.** Notes on systematic, nomenclature and chorology about the genus *Narcissus* Linnaeus (*Amaryllidaceæ*). One new species is described and illustrated in the section *Apodanthi* A. Fernandes (1969): *N. arundanus* Fernández Casas, from the Serranía de Ronda range (Andalucía, Spain).

**Zusammenfassung.** Es werden systematische, nomenklatorische und chorologische Anmerkungen zur Gattung *Narcissus* Linnaeus (*Amaryllidaceæ*) gemacht. Eine neue Art s in der Sektion *Apodanthi* A. Fernandes (1969) wird beschrieben: *N. arundanus* Fernández Casas, aus Serranía de Ronda (Andalucía, Spanien).

**Résumé.** Notes systématiques, nomenclaturales et chorologiques au sujet du genre *Narcissus* Linnaeus (*Amaryllidaceæ*). Il se décrit et s'illustre une espèce nouvelle dans la section *Apodanthi* A. Fernandes (1969): *N. arundanus* Fernández Casas, provenant de la Serranía de Ronda (Andalucía, Espagne).

**Resumo.** Notas sistemáticas, nomenclaturales e corológicas sobre o género *Narcissus* Linnaeus (*Amaryllidaceæ*). Descrebe-se e ilustra-se uma espécie nova na seção *Apodanthi* A. Fernandes (1969): *N. arundanus* Fernández Casas, própria da Serranía de Ronda (Andalucía, Espanha).

**Resumen.** Notas sistemáticas, nomenclaturales y corológicas acerca del género *Narcissus* Linnaeus (*Amaryllidaceæ*). Se describe e ilustra una especie nueva en la sección *Apodanthi* A. Fernandes (1969): *N. arundanus* Fernández Casas, que se cria en la Serranía de Ronda (Andalucía, España).

It continues our series of short notes dealing with the genus *Narcissus* Linnaeus (*Amaryllidaceæ*); see our previous paper, the fifteenth in the series, F. J. FERNÁNDEZ CASAS (28-xii-2009).

It is now proposed a new species that belongs to the section *Apodanthi* A. Fernandes (1969), *Narcissus arundanus* Fernández Casas, close related with *N. Cuatrecasasii* Fernández Casas, Lainz & Ruiz Rejón, being a geographical West vicarious of which. A distributional map of both species with the all known localities it has been made.

## Sectio *Apodanthi* A. Fernandes (1969)

***Narcissus arundanus*** Fernández Casas, **spec. nov.**, *Fontqueria* 56(06): 49-62 [seorsim: 1-12] (09-vi-2010)

TYPUS: *F. J. Fernández Casas* 13897, 02-IV-1993 (herb. FJFC; 806407, holo-)

ICONOGR.: lamina nostra i (pag. 51).

ICONOGR. (photo-): laminæ nostræ ii (pag. 55), iii (pag. 56), iv (pag. 57), v (pag. 58), vi (pag. 59), vii (pag. 60), viii (pag. 61), ix (pag. 62).

DISTR. GEOGR.: Hispania (Cádiz, Málaga). Cf. tabula I, pagella 53.

**ABREVIATA DIAGNOSIS** vel character essentialis

Habitu cum *Narcisso Cuatrecasasii* aliquo modo congruente sed *tubo florali* quam

tepals brevior nec valde longior, *spatha* perbrevis, difficile dimidia longitudine tubi attingenti, *pedunculo* florali longior, usque 2 cm attingenti vel etiam superanti atque *corona* modice maiore, apprime differt.

**MAIN DIAGNOSTIC FEATURES** or diagnostic characters

*Narcissus arundanus* is relatively close of *N. Cuatrecasasii*, nevertheless it differs in the floral tube shorter than the tepals, in the very short spathe that hardly reaches the half of the floral tube length, and in their slightly bigger corona.

**DESCRIPTIO** ex *F. J. Fernández Casas Ff\_10-033*, floriger

Quoad folia atque scapi, *planta* omnino glauca, 18-40(-50) cm. BULBUS 1,3-2,0 cm ø, pyriformis vel subsphaericus; *tunicæ* externæ castaneæ; *collum* albidiusculum, 0,3-1,2 cm. FOLIA quam scapum subæquilonga vel parum superantia; raro breviora; *striae* 6-8, virides; limbus inter contiguas strias planus, glaucus; *transversa sectio* ad instar specierum sectionis *Apodanthi* figura typica; apicaliter fere plana, ad basim modice canaliculata, in medio aperte V-formæ; dorsaliter modice bicarinata atque extus binervata, *nervi* aliquando valde laterali, submarginali, interdum parum conspicui; inferne plena, superne magni-lacunosa; *apex* incrassato callosus, carthilaginosus, albidiusculus seu translucidus. SCAPUS plus minusve cylindricus, modice striatus, base excepta plena secus tota longitudine fistulosus.

FLORES sæpe unici, raro geminati; intense lutei, valde homochroi; sæpe suberecti vel patenti, raro modice declinati. *Spatha* tenuis, translucida, albidiuscula, ad duodecim nervata, inferne vaginata plerumque usque ad ovarium quod demum in fructificatione tempore amplificato scissuræ initiat; florendi tempore *spatha* usque 1/3-1/2 longitudine tubi attingit; *nervi* paralleli, indivisi, conspicui, iuniori viridi, demum læte brunnei. *Pedunculus* (4-)6-12(-25) mm, longitudinaliter vix striatus; sæpe rectus vel usque 30° inclinatus, ad apicem modice seu abrupte geniculatus (saltem infractus). *Tubus* tota longitudine stricte turbinatus, ad oram abrupte dilatatus et perspicue buccinatus; base plus minusve viridescente excepta, omnino flavus. *Tepala* sex, biverticillata, trimera, sæpe e basi usque 1/4-1/3 sua longitudine imbricata (seu invicem tegentia), florendi tempore patentia vel vix reflexa, fere plana vel modice undata; sæpe longitudinaliter undecim nervata, obtusa; *tepala externa* (sepaloidea) quam interna modice latiora atque obtusiora, mucrone apicale longior atque albo penicillo basale conspicior; *tepala interna* (petaloidea) strictiora atque acutiora, novem-nervata, mucrone apicale brevior atque albo penicillo basale minori. *Corona* poculiformis, modice sex sulcata, latitudine quam longitudine fere duplo maiora, saltem superne fere cylindrica, saltem ad basim modice dilatata; margo plus minusve integro seu subrepandus vel crenatus. *Androceum* biverticillatum, trimerum. *Filamenta* secus tubum fere tota longitudine adnata atque prominentia, distaliter 1,5 mm libera; partes liberi ad basim cylindrici rectique, apicem versus subulati, introrsi; illi verticilli supremi in suprema tubi florali dilatatione admodum insidenti. *Antheræ* ca. 2,0 × 0,5 mm, adultæ flavæ, post dehiscentia parum atratæ; rectæ, exappendiculatæ; inclusæ, dorsifixæ, submedifixæ; illæ superioræ supra orem dispositæ; illæ inferioræ infra orem dispositæ vel plus minusve coæcutatæ; antheræ verticilli ambo parum imbricatæ vel 0,3-0,7 mm semotæ. *Ovarium* iuvenile sphaericum vel subsphaericum, demum elongatum atque transversaliter vix trigonum, angulis obtusis, fere rotundatis; triloculare. *Rudimenta seminalia* alba, albidiuscula vel modice translucida. *Stylus* cylindricus, rectus, quam coronam lætior flavescens (usque modice albicans); ad basim canaliculo circumdatus (nectarifero?); apicibus floribus dolichostylis in medio ore ad 0,5-2,0 mm exstans. *Stigma* modice dilatatum, profunde trilobatum, inter antheras superiores vix exstante, raro vis exstante.

**DESCRIPTIO** ex *F. J. Fernández Casas 13897*, floriger (typus)

Quoad folia atque scapi, *planta* satis viridis etiamsi glauca. FOLIA 26-30 cm, aperte V-

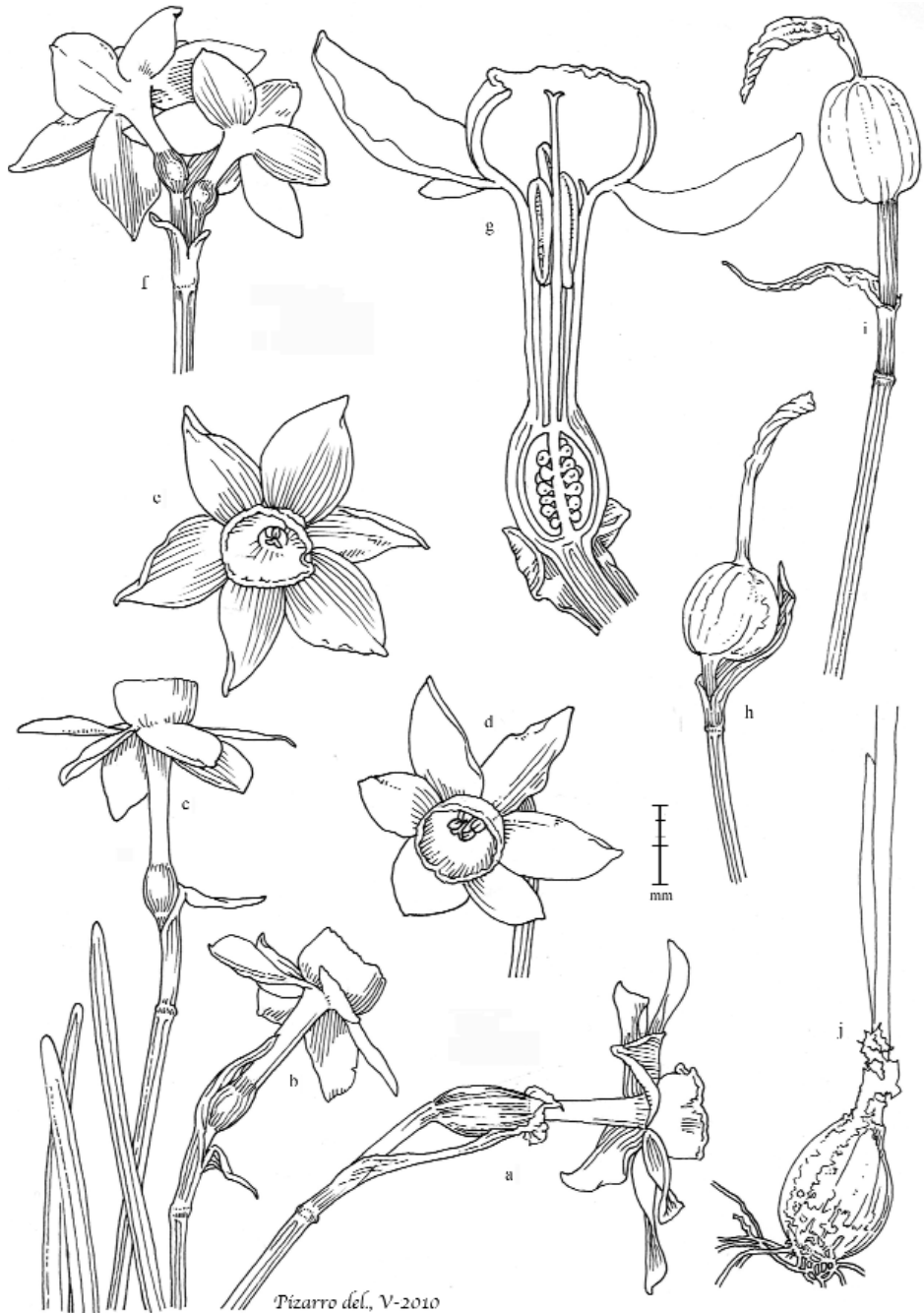


PLATE I. *Narcissus arundanus* Fernández Casas. a-g) Málaga: Montejaque, F. J. Fernández Casas Ff\_10-033, 15-III-2010. h-i) Ibidem, F. J. Fernández Casas Ff\_10-069, 20-IV-2010. j) Málaga: Benaoján, F. J. Fernández Casas Ff\_10-039, 17-III-2010.

formæ, dorsaliter bicarinata. SCAPUS strictus, 25-28 cm, striatus, modice ancipitius. FLOS sæpe unicus, rare duo; *pedunculus* satis longus, usque 23 mm, cylindricus, striatus; *tubus floralis* brevis; *tepala* magna, oblonga, quam tubum subæqualia vel longiora. FRUCTUS iuvenilis (seu *ovarium*) fere sphaericus.

**DESCRIPTIO** ex *F. J. Fernández Casas Ff\_10-039*, floriger

BULBUS piriformis, 1,3-2,0 cm ø; *tunicæ* externæ atro castanneæ; *tunicæ colli* cylindricæ, inferne castanneæ (4-19 mm), superne albicantes, plus minusve translucidæ (20-47 mm). FOLIA usque 3,2 × 2,2 mm lata, rare latiora vel grossiora, valde variabilia, cf. tabula I, hæc pagella 52. SCAPUS 17-40 cm longus, 2,0-3,0 × 1,7-2,4 mm latus et grossus, valde striatus.

**TABLE I**

FEATURES OF THE COLLECTION *F. J. Fernández Casas Ff\_10-039*

Bulb size L×l×p(mm)*	Neck length (mm)**	Leaves number and length. L (cm)***	Scape size L(cm)×l(mm)×p(mm)	Flower number
24×17×13 (3)	06, 30	2+2+2; 22, 19, 18	25×2,5×2,2	1
19×15×13 (2)	03, 20	2+2; 24, 22	broken	unknown
17×12×09 (1)	08, 34	2; 34, 31	35×2,4×2,0	1
15×11×11 (1)	08, 28	3; 18, 17, 16	17×2,0×1,7	1
17×11×10 (1)	04, 28	2; 30, 26	29×2,4×2,1	2
19×14×12 (1)	12, 39	2; 29, broken	31×2,8×2,4	1
19×14×13 (1)	14, 47	2; 38, broken	broken; 2,8×2,3	unknown
19×13×12 (1)	08, 43	2; 29, 35	34×2,5×2,0	1
19×13×12 (1)	08, 28	3; 27, 30, 31	31×2,5×2,2	1
17×12×09 (broken)	11, 31	2; 25, 26	broken	unknown
14×09×09 (broken)	10, 23	2; 33, 34	broken	unknown
18×17×13 (3)	08, 33	2+2+2; broken	broken; 2,2×1,8	unknown
18×14×11 (1)	09, 47	2; 33, 37	36×2,8×2,4	1
20×13×13 (1)	19, 44	2; 37, 39	40×3,0×2,2	1
17×11×10 (1)	10, 25	2; broken	34×2,9×2,0	1
21×15×13 (1)	08, 40	2; 34, 37	broken; 3,0×2,4	unknown
20×16×14 (1)	09, 35	3; 38, 39, broken	broken; 3,0×2,5	unknown
20×13×13 (1)	19, 44	2; 37, 39	40×3,0×2,2	1

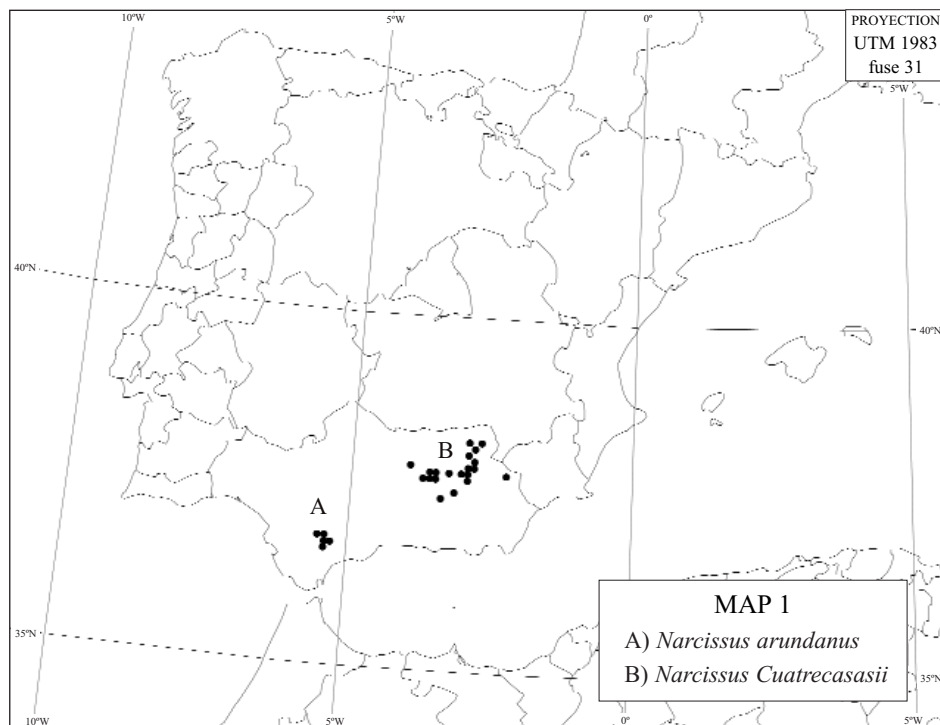
\*) Length × wide × thick (estimated number of bulbs, due to their internal division)  
 \*\*) Length of the brown external cylindrical tunics, complete length of the internal cylindrical whitish tunics  
 \*\*\*) Leaves number; leaves length (if they are not broken)

**DESCRIPTIO** ex *F. J. Fernández Casas Ff\_10-067*, frugifer

FOLIA glauca, quam scapos parum altiora vel vix subæquantia. SCAPUS modice ancipitius, glaucus, striatus.

FLOS unicus. *Spatha* papyracea vel parum hyalina, albicans vel læte castanea, duodecim striato nervata, 30-38 mm, ad basim nusque 8-12 mm cylindrico vaginata, reliqua plus minusve patentia. *Pedunculus* floralis plus minusve cylindricus, in sicco valde sex-striatus.

CAPSULA inmatura viridis, subsphaerica vel parum ovoidea, vix obtusissime trigona, ad 10-13 × 12-15 mm; *base apice*que obtusa vel retusa; *pedunculus* 15-25 mm, cylin-



dricus vel apicem versus modice dilatatus, aliquo modo funalis, modice sex striatus, viridis; *striae* longitudinales virides. *Capsula matura* et sicca valde contracta, usque trifida, laete castanea. SEMINA (verosimiliter parum imatura tantum visa) nigra, micantia, lateraliter albo appendiculata; globosa, ca. 1,8-3,2 × 1,4-2,0 mm.

#### REGARDING THE ETYMOLOGY and the orthoepy of specific name

The species take their name from the city and region of Ronda (Málaga province), where it is endemic. The Latin adjective *arundanus*, -a, -um, it is applied for the people and things of Ronda, whose Latin name is *Arundo*. It is a paroxytone voice, arundánus.

#### OBSERVATIONS

Considering their morphology, *Narcissus arundanus* resembles more *N. Cuatrecasasii* than any other species of the section *Apodanthi*. Maybe hence has been confused with such species during a lot of time.

Perhaps they were English authors (botanists, botanical hunters, travelers or gardeners) the first ones in getting the attention on this plant. C. M. STOCKEN (1965: 62 and fig. 6, in front of the page 49; 1969: 77) he found this plant, to which named "*N. scaberulus* Grazalema form". But in the second publication there is a note of the editor A. P. Hamilton, in the page 78, that it identifies it as *N. rupicola* subsp. *pedunculatus*; another point made Robert Desmond MEIKLE (1970: [4]). John W. BLANCHARD (1970: 48), speaks also about this plant which he accurately identifies as "*N. rupicola pedunculatus*", and he gives us ecological and morphological comments on the plants from Grazalema, as well as in the field and in cultivation.

EXAMINED SPECIMENS and bibliographic references

**Hs, CÁDIZ:**

- 30STF77** 36.82°, -005.52°; «El Bosque: hacia Benamahoma», A. APARICIO MARTÍNEZ & S. SILVESTRE DOMINGO (1987: 211, ut *N. Cuatrecasasii*).
- 30STF86** 36.73°, -005.40°; NF8562, «Villaluenga del Rosario: cercanías del Chaparral», A. APARICIO MARTÍNEZ & S. SILVESTRE DOMINGO (1987: 211, ut *N. Cuatrecasasii*).
- 30STF86 TF8566, «Benaocaz: subida a Casa Fardela», A. APARICIO MARTÍNEZ & S. SILVESTRE DOMINGO (1987: 211, ut *N. Cuatrecasasii*).
- 30STF87** 36.82°, -005.40°; «Grazalema», C. M. STOCKEN (1965: 62 and fig. 6, in front of the page 49; 1969: 77; the author name it "*N. scaberulus* Grazalema form", but in the second publication there is the editor's note of A. P. Hamilton, in the page 78, naming it as *N. rupicola* subsp. *pedunculatus*); R. D. MEIKLE (1970: [4]).
- 30STF87 TF8272, «Grazalema: Sierra del Pinar, fuente del Pinar», A. APARICIO MARTÍNEZ & S. SILVESTRE DOMINGO (1987: 211, ut *N. Cuatrecasasii*).
- 30STF87 TF8870, «Grazalema: encima y detrás del pueblo de Grazalema, ad 900 m. Roquedos calizos», *F. J. Fernández Casas 13897*, 02-IV-1993 (herb. FJFC; MA 806407, holo-; typus *N. arundanus*).
- 30STF87 TF8870, «Grazalema: supra oppidum Grazalema, ad 900 m. In rupibus calcaris præruptis», *F. J. Fernández Casas 13972*, 02-III-1994 (herb. FJFC[1]).
- 30STF87 TF8971, «Grazalema: 950 m. Roquedos calizos umbrosos», *G. A. López González 3007 & R. Morales Valverde*, 21-IV-1982 (MA 243886).
- 30STF96** 36.73°, -005.29°; «Villaluenga del Rosario: Sierra de Líbar», A. APARICIO MARTÍNEZ & S. SILVESTRE DOMINGO (1987: 211, ut *N. Cuatrecasasii*).

**Hs, MÁLAGA:**

- 30STF85** 36.64°, -005.40°; «Cortes de la Frontera: Sierra de los Pinos», A. APARICIO MARTÍNEZ & S. SILVESTRE DOMINGO (1987: 211, ut *N. Cuatrecasasii*).
- 30STF96** 36.73°, -005.29°; TF9763, «Benaoján: cueva de la Pileta», A. APARICIO MARTÍNEZ & S. SILVESTRE DOMINGO (1987: 211, ut *N. Cuatrecasasii*).
- 30STF96 TF9763, «Benaoján: prope cueva de la Pileta. In rupibus calcareis umbrosis», *F. J. Fernández Casas Ff\_10-039*, 17-III-2010 (herb. FJFC).
- 30STF96 TF9569; «Montejaque: finca los Cucaderos, ad 800 m. In rupibus rupestribusque calcareis septentrionem spectantibus», *F. J. Fernández Casas Ff\_10-033*, 15-III-2010 (herb. FJFC, fl.)
- 30STF96 TF9569; «Montejaque: finca los Cucaderos, ad 800 m. In rupibus rupestribusque calcareis septentrionem spectantibus», *F. J. Fernández Casas Ff\_10-067*, 20-IV-2010 (herb. FJFC; fr.)

**ACKNOWLEDGEMENTS**

To our good friend Manuel Becerra Parra, who kindly communicated us important chorological data about the new species. Ulpiano Emilio Souto Mandelos processed the digital photographs of the plates ii-ix, and he made the distributional map, in the page 53. José María Pizarro Domínguez drew the plate i, in the page 51.

**CITED LITERATURE**

- APARICIO MARTÍNEZ, A. & S. SILVESTRE DOMINGO (1987). *Flora del parque natural de la Sierra de Grazalema*. 303 págs. Agencia de Medio Ambiente. Junta de Andalucía. Sevilla.
- BLANCHARD, J. W. (1970). Spanish diary. *The Daffodil & Tulip Year Book 1970*: 45-48, 4 photogr.
- FERNÁNDEZ CASAS, F. J. (28-xii-2009). Narcissorum notulæ, XV. *Fontqueria 56*(05): 37-48.
- MEIKLE, R. D. (1970). *Narcissus rupicola* subsp. *pedunculatus* (*Amaryllidaceae*). *Curtis's Bot. Mag.*, new ser. **178**(1): ad tab. 577.
- STOCKEN, C. M. (1965). Some *Narcissus* and Tulip species from Andalusia. *The Daffodil and Tulip Year Book 1965*: 56-64.
- STOCKEN, C. M. (1969). *Andalusian flowers and countryside*. 183 págs. Kingsbride.



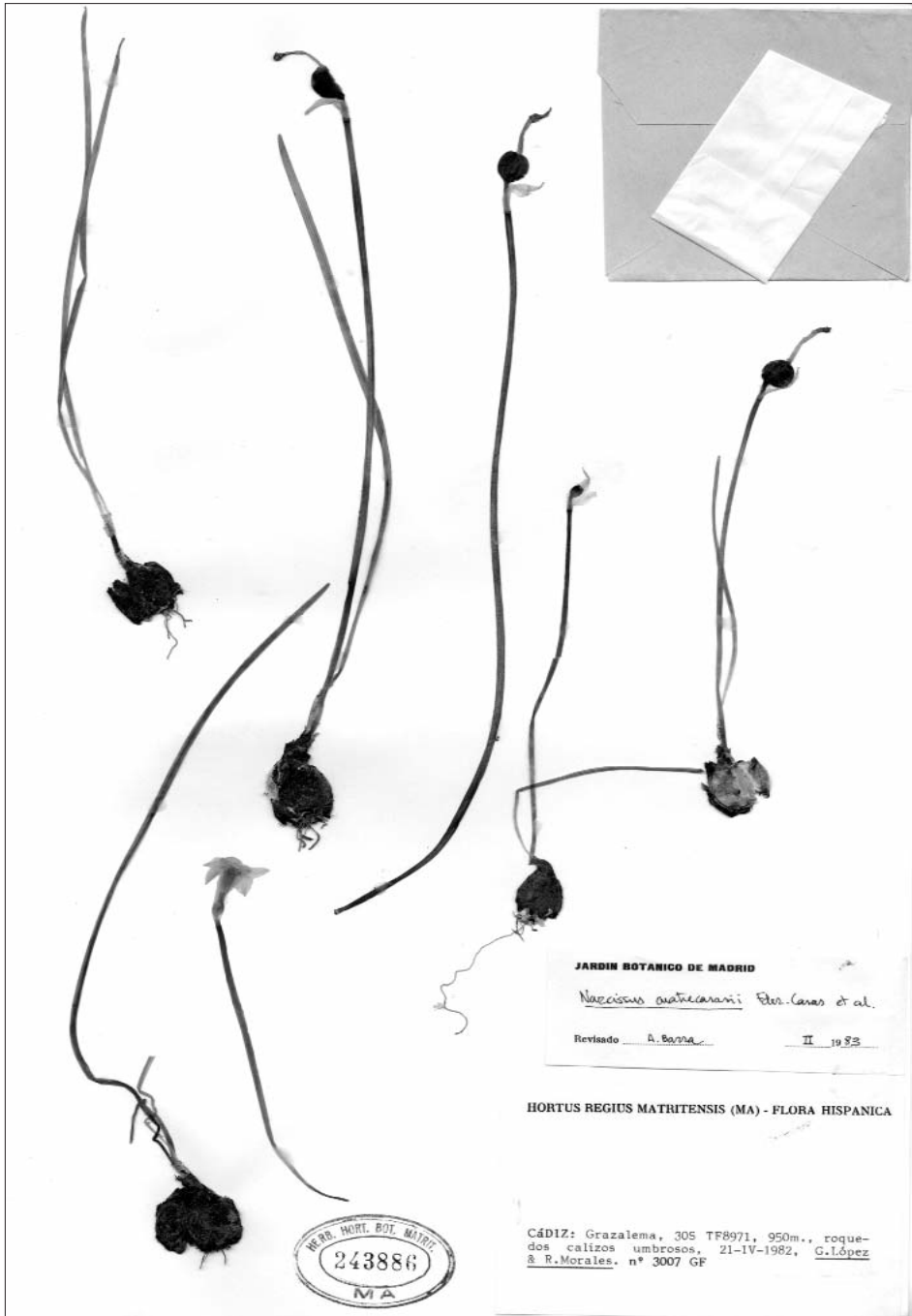


PLATE II. *Narcissus arundanus* Fernández Casas. Cádiz: Grazalema, G. A. López González 3007 & R. Morales Valverde, 21-IV-1982 (MA 243886).

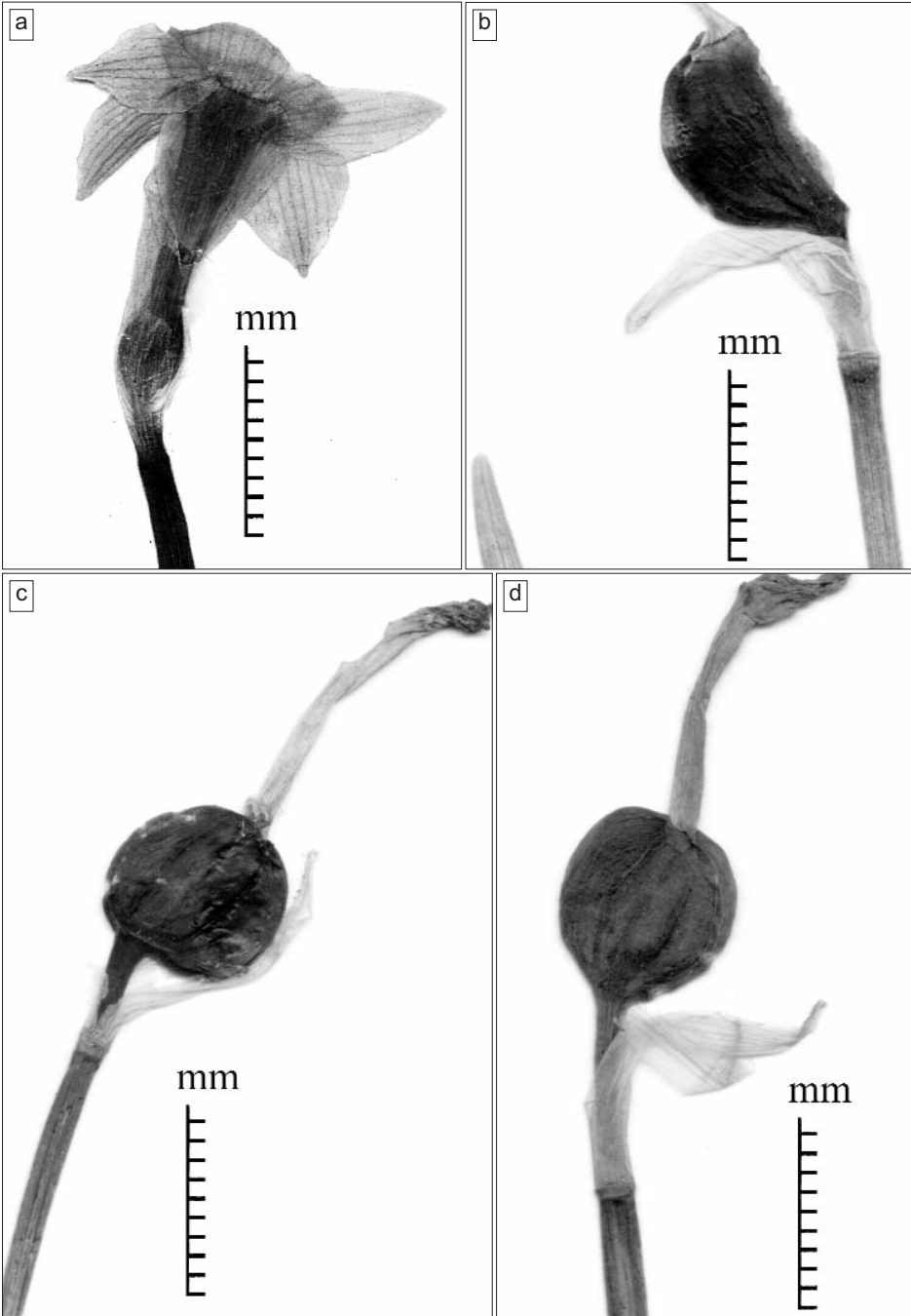


PLATE III. a) Enlarged flower. b-d) Young fruits. *Narcissus arundanus* Fernández Casas. Cádiz: Grazaema, G. A. López González 3007 & R. Morales Valverde, 21-IV-1982 (MA 243886).

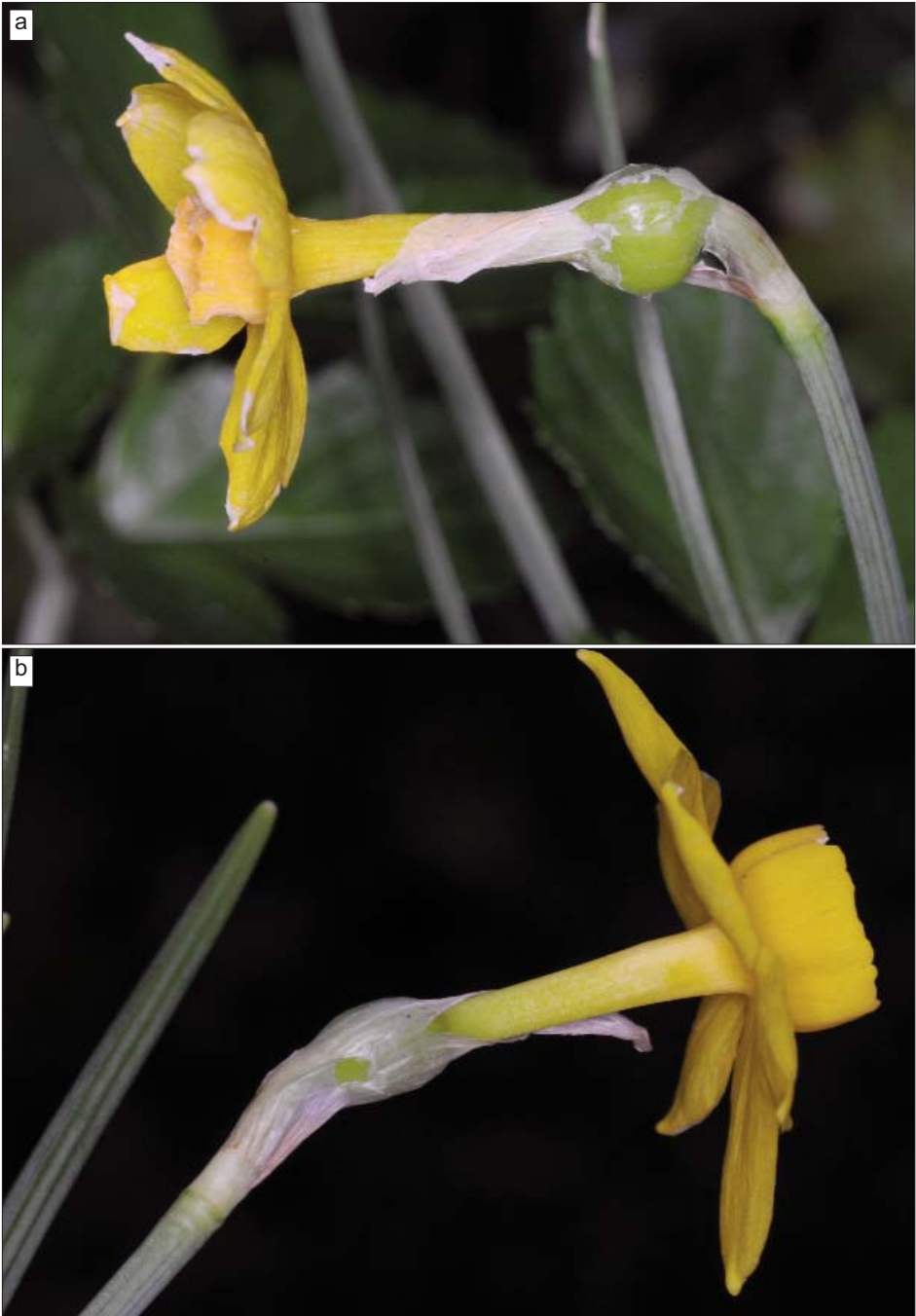


PLATE IV. *Narcissus arundanus* Fernández Casas. Málaga: Montejaque, los Cucaderos, F. J. Fernández Casas Ff\_10-033, 15-III-2010.

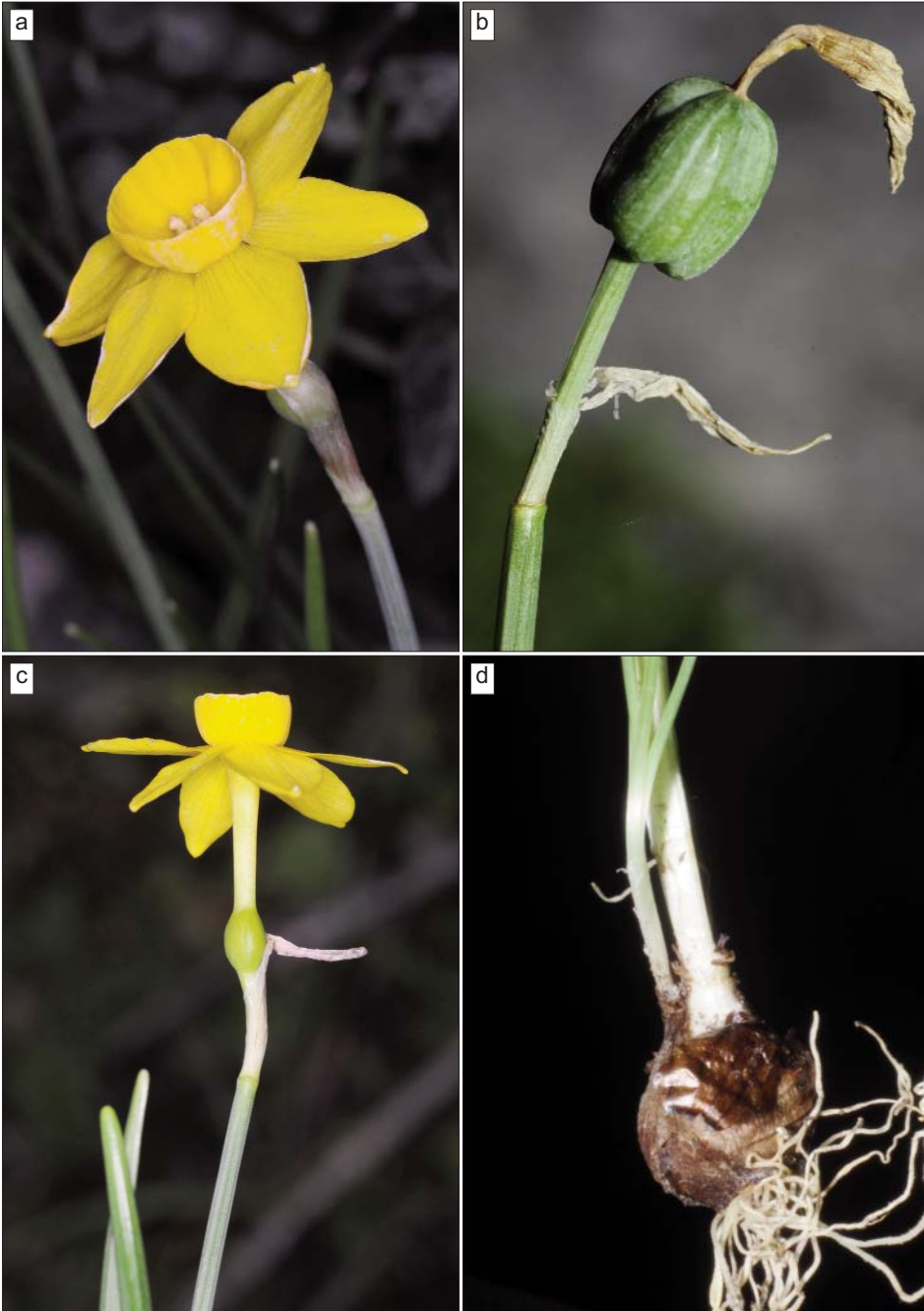


PLATE V. *Narcissus arundanus* Fernández Casas. a, c) Málaga: Montejaque, F. J. Fernández Casas Ff\_10-033, 15-III-2010. b) Ibidem, F. J. Fernández Casas Ff\_10-067, 20-IV-2010. d) Málaga: Benaoján, F. J. Fernández Casas Ff\_10-039, 17-III-2010.



PLATE VI. *Narcissus arundanus* Fernández Casas. Málaga:Montejaque, F. J. Fernández Casas Ff\_10-033, 15-III-2010.



PLATE VII. *Narcissus arundanus* Fernández Casas. Málaga: Montejaque, F. J. Fernández Casas Ff\_10-033, 15-III-2010. Longitudinal section of a long-styled flower.

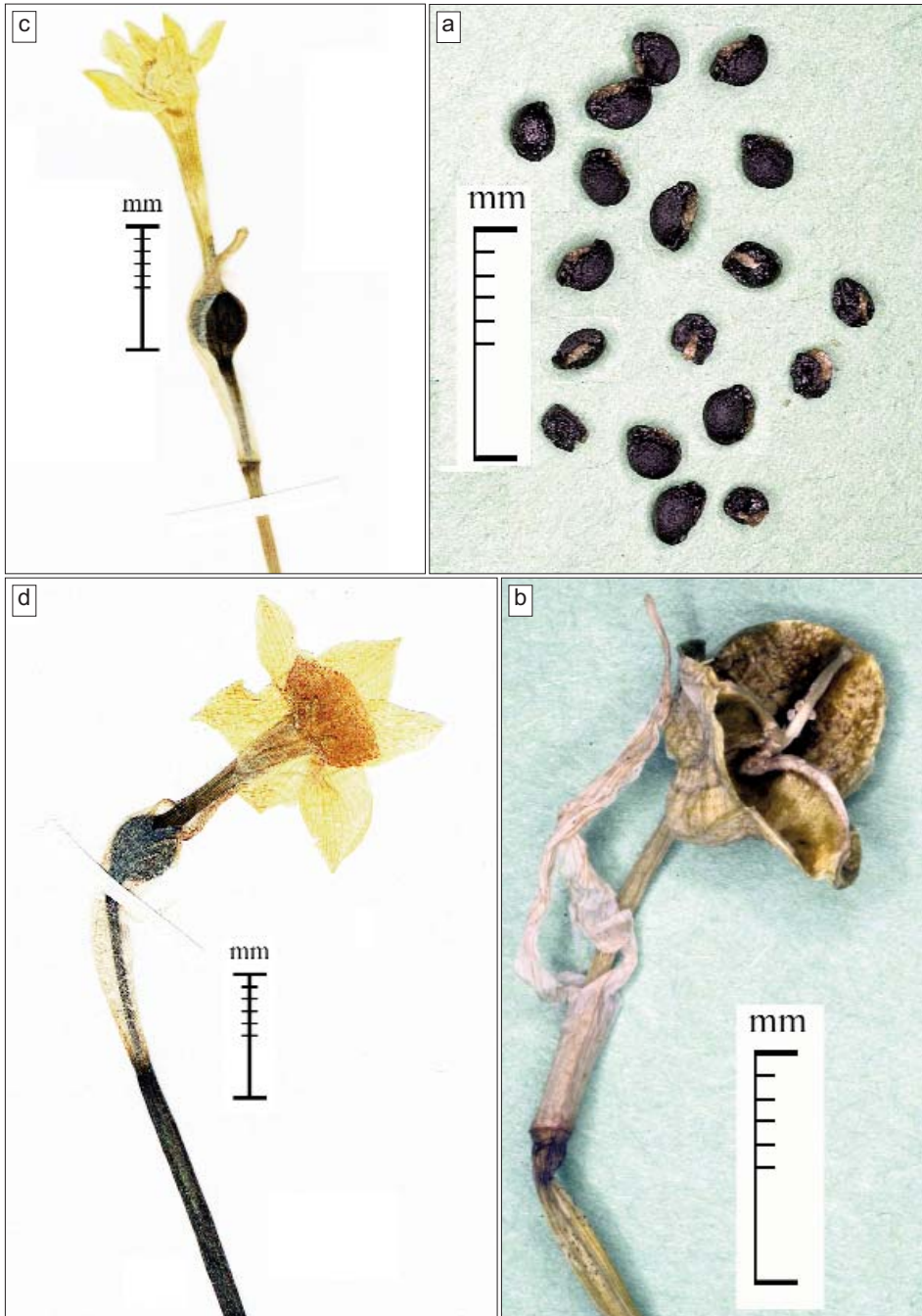


PLATE VIII. *Narcissus arundanus* Fernández Casas. a) Seeds, perhaps ripe. b) Dried ripe fruit. c, d) Pressed flowers. a, b) Málaga: Montejaque, F. J. Fernández Casas Ff\_10-067, 20-IV-2010. c, d) Cádiz: Grazalema, F. J. Fernández Casas 13897, 02-IV-1993 (MA 806407, holo-; type).

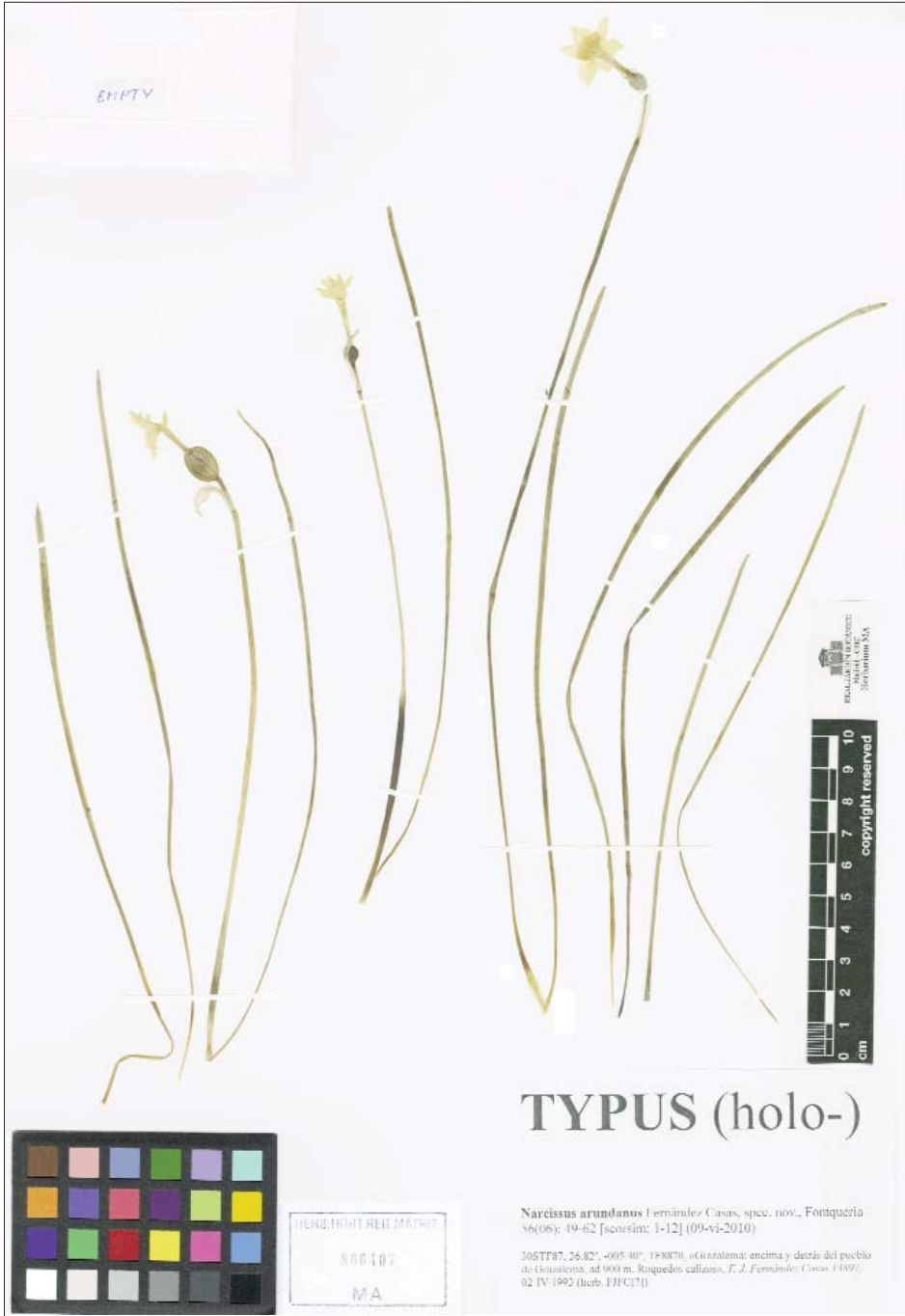


PLATE IX. *Narcissus arundanus* Fernández Casas. Cádiz: Grazalema, F. J. Fernández Casas 13897, 02-IV-1993 (MA 806407, holo-; type).